

# FAST-FOLD®

HIGH PERFORMANCE FOLDING DOOR

## America's First Break-Away™ Door and Still a Workhorse.

With its natural ability to withstand forklift impact without sustaining damage, the Fast-Fold door introduced the Break-Away concept to the United States in 1995.

It can be used almost anywhere, for interior, exterior, warehousing, manufacturing or commercial applications. Because of the many patented, proven design features like its rugged Tec-Trak™ and floating Ryflex™ roller system, it provides millions and millions of cycles of dependable service.

**Fast** - Opens at up to 84 inches per second for improved traffic flow.

**Safe** - With its full height, clear PVC panels, the Fast-Fold provides great visibility and added safety for interior applications where fork trucks and other equipment are crossing the threshold in both directions, crossing the door's traffic lane, or both.

**Energy Efficient** - Overlapping Puralon™ panels with rope tie panel connectors offer a great seal to dramatically reduce energy loss.

**Durable, Low Maintenance** - Engineered to last millions of cycles with minimal maintenance.

**Takes a Hit** - Withstands a fork truck impact with little or no damage, virtually eliminating down time.

**Easy Installation** - Modular construction and easy to hang panel mounting hardware allows for quick and easy installation.



**RYTEC**  
CORPORATION  
*Driving The Door Industry.™*

# FAST-FOLD<sup>®</sup>

## HIGH PERFORMANCE FOLDING DOOR

**Specifications:** Subject to change

**Model:** Rytec<sup>®</sup> Fast-Fold<sup>®</sup> Door

**Standard Size:** Up to 35 feet wide by 25 feet high

**Door Panel:** Six door panels are constructed of 3/8 inch thick Puralon. Option 1/2 inch thick Puralon panels available. Panels are mounted on six center suspended rotor arms.

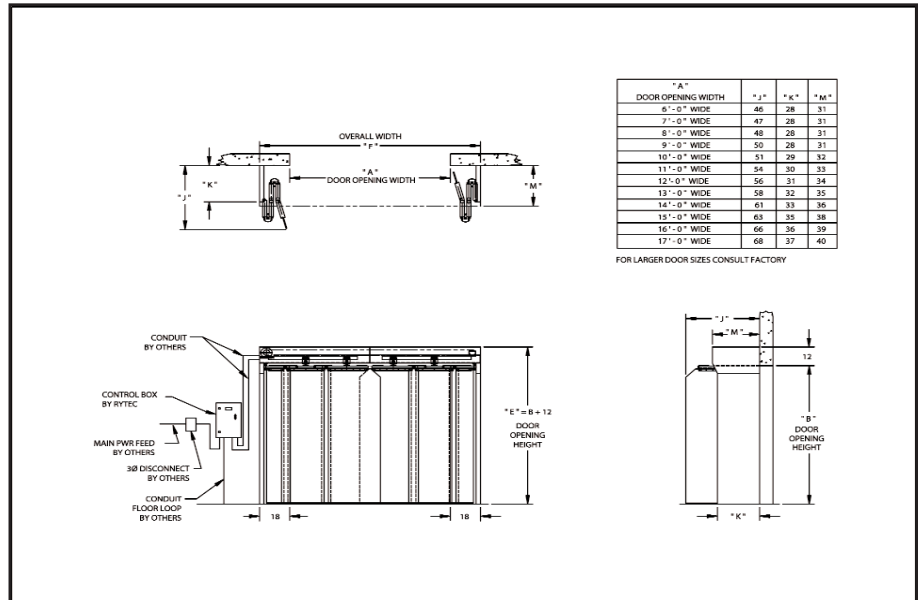
**Side Frames:** Side frames and covers made of 16 gauge cold-rolled sheet metal welded to structural angle. Exposed metal surfaces chemically cleaned then painted with a two component acrylic urethane top coat. Door is fully modular with no welding required for installation.

**Door Seal:** Door panels overlap up to 12 inches and are held together by rope tie panel connectors. Optional Velcro<sup>®</sup> seam connectors available.

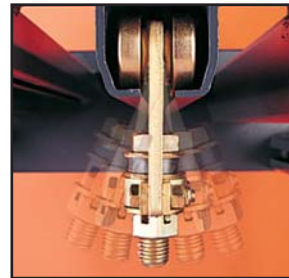
**Roller System:** Door equipped with Tec-Trak I roller system with a minimum of 16 model GS 1-7/8 inch Ryflex floating rollers. Roller assembly deflects up to 7 degrees in the vertical plane in order to maintain full roller surface bearing contact with track. Rollers are carburized, hardened and fully sealed with ball bearings. Optional BFGS roller available. Option Tec-Trak II roller system available.

**Roller Track:** Roller track is constructed of cold-formed alloy steel, integrally mounted to the face of up to two 6 inch structural channels.

**Drive System:** Three-phase, variable



**Rollers**  
Model GS (1-7/8 inch) rollers standard. Options available.



**Rollers**  
Ryflex floating rollers pivot up to 7 to continually maintain contact with the track, reducing wear and tear.



**System 3 Controller**  
Makes programming and troubleshooting easier, more flexible and more precise than ever.

**Electrical Controls:** System 3 controller is housed in a NEMA 4 rated enclosure with factory set parameters. Self-diagnostic features and a two-line, 32-character LCD display in English, Spanish or French provide quick and straightforward installation and control adjustments. Programmable inputs and outputs accommodate special control requirements without the need for additional electrical

